

# MEDICOTTURE

FALL 2024







There she  
*GLOWS.*  
Again

STAND OUT WHEREVER YOU  
ARE, WHATEVER YOU DO.



**NEW STYLE | MC315**  
**TWO-TONE SHERPA**  
**HOODED ZIP**  
**PULLOVER**

Junior fit

3 pockets: 1 zipper chest, 2 patch  
Sherpa hood, top of body,  
and top of sleeves

Dobby lower body, lower sleeves,  
and chest pocket

Drop shoulder

Adjustable drawstring hem

Sizes:

R: XS-2XL (23")

Shown in Nitro Nude

**NEW**  
**COLOR**  
**NINU**  
NITRO NUDE



BLK  
BLACK



NAVY  
NAVY



UTMG  
ULTRA  
MAGENTA



**STYLE | MC502**

**ZIP FRONT  
JUMPSUIT**

- Shaped rib-knit neckline
- Bungee ID badge loop
- Rib-knit elastic waistband with drawstring
- 5 pockets: 1 chest, 2 front, 2 cargo
- Rib-knit storm cuffs
- Tapered jogger leg 9 1/2"

Sizes:  
R: XS-2XL (29")  
Shown in Ultra Magenta  
See page 11 for Holiday Colors  
**Available in 3 colors**



## *Amp Fabrics*

FABRIC: Four-way Stretch | Moisture Wicking | Easy Care | 95% Polyester | 5% Spandex Dobby

CONTRAST FABRIC: 2x2 Rib Knit | 92% Polyester | 8% Spandex    UNDERSCRUB: 92% Polyester | 8% Spandex

FLEECE FABRIC: 62% Polyester | 33% Cotton | 5% Spandex Fleece

Turn on the  
Bright



**BLK**  
BLACK



**HGRY**  
HEATHER GRAY



**CYLM**  
CYBER LIME

**NEW STYLE | MC316**  
FLEECE KNIT ZIP  
FRONT LOGO HOODIE

Junior fit  
2 patch pockets  
Embossed logo on back  
Rib-knit cuffs and hem

**Sizes:**  
R: XS-2XL (24 1/2")  
Shown in Cyber Lime  
**Available in 3 Colors**

**NEW STYLE | MC106**  
FLEECE KNIT NATURAL  
RISE JOGGER

Junior fit  
Rib-knit waistband with drawstring  
2 front pockets with rib-knit trim  
Rib-knit cuffs  
Tapered jogger leg, 9.5" opening

**Sizes:**  
R: XS-2XL (28 1/2")  
Shown in Cyber Lime  
**Available in 3 Colors**

**NEW STYLE | MC705**

**QUARTER ZIP V-NECK  
TUCKABLE TOP**

Junior fit  
Rib-knit back neckband  
1 chest pocket  
Cap sleeves  
Rounded high-low hem

**Core Color Sizes:**

XS-3XL (25")

**Fashion Color Sizes:**

XS-2XL (25")

Shown in Purple Surge

**Available in up to 6 Colors**

**NEW STYLE | MC105**

**HIGH RISE  
PULL-ON PANT**

Junior fit  
Rib-knit elastic waistband  
4 pockets: 2 front, 1 patch cargo,  
1 patch cargo with D-ring  
Wide leg, 20" opening

**Sizes:**

R: XS-2XL (31")

T: XS-XL (34")

Shown in Purple Surge

**Available in up to 5 Colors**

**NEW  
COLOR**

**PUSG  
PURPLE SURGE**







**NEW  
COLOR**

**CYLM  
CYBER LIME**

**NEW  
COLOR**

**PUSG  
PURPLE SURGE**

**STYLE | MC703**

**ROUND NECK  
TUCKABLE TOP**

Rib-knit trim neckline,  
armholes, back yoke  
Bungee ID badge loop  
2 pockets: 1 zipper shoulder,  
1 zipper side seam  
Dolman sleeves  
Rounded hem

**Sizes:**

R: XS-2XL (25")

Shown in Navy  
and Purple Surge

**Available in 6 Colors**

**STYLE | MC101**

**MID RISE DRAWSTRING  
CARGO PANT**

Rib-knit elastic waistband  
with drawstring  
4 pockets: 2 front, 2 cargo  
Side vents  
Tapered leg, 9.5" opening

**Sizes:**

R: XS-3XL (29.5")

P: XS-2XL (27")\*

**Fashion Color Sizes:**

R: XS-2XL (29.5")

Shown in Navy  
and Purple Surge

**Available in 7 Colors**

\*See product guide for  
fashion color sizing



**NEW STYLE | MC707**  
**LONG SLEEVE LETTUCE**  
**EDGE UNDERSCRUB**

Junior fit  
Mock neck  
Lettuce-edged sleeves and hem  
Rounded hem

**Sizes:**  
R: XS-2XL (25")  
Shown in Wine

**Available in 2 Colors**



**DEMD**  
DEEP EMERALD



**WINE**  
WINE



**DEEMD**  
DEEP EMERALD



**WINE**  
WINE

**STYLE | MC502**

**ZIP FRONT JUMPSUIT**

- Shaped rib-knit neckline
- Bungee ID badge loop
- Rib-knit elastic waistband with drawstring
- 5 pockets: 1 chest, 2 front, 2 cargo
- Rib-knit storm cuffs
- Tapered jogger leg, 9 1/2" opening

**Sizes:**

R: XS-2XL (29")

Shown in Wine

Holiday Exclusive Colors:

Deep Emerald and Wine

**Available in 2 Holiday Colors**



**DEEMD**  
DEEP EMERALD



**WINE**  
WINE



**BLK**  
BLACK



**NEW STYLE | MC317**  
VELOUR ZIP FRONT  
LOGO HOODIE

Junior fit  
2 patch pockets with rib-knit trim  
Embossed logo on back  
Rib-knit cuffs and hem

Sizes:  
R: XS-2XL (24 1/2")

Shown in Wine  
Available in 3 Colors

**NEW STYLE | MC107**  
VELOUR NATURAL  
RISE JOGGER

Junior fit  
Rib-knit waistband with drawstring  
2 front pockets with rib-knit trim  
Rib-knit cuffs  
Tapered jogger leg, 9" opening

Sizes:  
R: XS-2XL (28 1/2")

Shown in Wine  
Available in 3 Colors







**NEW STYLE I MC706**  
**KNIT LETTUCE-EDGED TOP**

Junior fit  
Round neckline with rib-knit trim  
1 chest patch pocket with rib-knit trim  
Lettuce-edged raglan sleeves and hem  
Rounded hem

**Sizes:**  
R: XS-2XL ( 23 1/2")  
**Fashion Color Sizes:**  
R: XS-XL ( 23 1/2")  
Shown in Cyber Lime  
**Available in 5 Colors**

**NEW**  
**COLOR**

**CYLM**  
**CYBER LIME**



*Layers Fabric*

FABRIC: Moisture Wicking | 92% Polyester | 8% Spandex



**STYLE I MC7448**

**V-NECK KNIT  
TUCK IN TOP**

Chest patch pocket  
Rib-knit shoulder yokes  
Bungee ID badge loop  
Back yoke

R: XS-3XL (27 1/2")

Shown in Periwinkle

**Available in 24 Colors**

**STYLE I MC7739**

**YOGA TWO CARGO  
POCKET PANT**

Jacquard elastic and  
rib-knit waistband  
Internal waist ties  
Two cargo, two back  
patch pockets

Extra accessory pocket

Side vents at hem

Straight leg, 16" opening

R: XS-5XL (31")

P: XS-2XL (29") \*

T: XS-XL (34") \*

Shown in Lilac

**Available in 24 Colors**

\*See product guide for  
fashion color sizing





**NEW FASHION STYLE | MC607**

**SPLIT ROUND NECK TOP**

Junior fit

Split crew neck

2 pockets: 1 patch, 1 patch with utility tab

Rib-knit back side panels

Side vents

**Sizes:**

R: XS-3XL (25.5")

Shown in Raspberry Tarte

**Available in 3 Colors**

**NEW FASHION STYLE | MC007**

**NATURAL RISE DRAWSTRING FLARE LEG PANT**

Junior fit

Elastic waistband with drawstring

5 pockets: 2 front, 1 cargo, 1 cargo with utility tab, 1 back in-seam

Rib-knit back side panels

Side vents at hem

Flare leg, 16" opening

**Sizes:**

R: XS-3XL (31")

T: XS-XL (34")

Shown in Raspberry Tarte

**Available in 3 Colors**

**NEW  
COLOR**

**RSPT  
RASPBERRY  
TARTE**

*Touch Fabrics*

FABRIC: Cool & Comfortable | Soft as Cotton | 76% Polyester | 21% Rayon | 3% Spandex

HEATHERED FABRIC: 76% Polyester | 21% Rayon | 3% Spandex

**STYLE I MC7459**

**V-NECK SHIRTTAIL TOP**

Overlapping rib-knit side panels

Accessory loop

Extra accessory pocket  
and pen slot

Two large patch pockets

Inside contrast neckband

**Core Color Sizes:**

R: XS-5XL (27")

**Fashion Color Sizes:**

R: XS-3XL (27")

Shown in Caribbean

**Available in up to 24 colors**

**STYLE I MC7710**

**JOGGER YOGA PANT**

Adjustable front waist ties

Side cargo pocket

Accessory loop

Two back patch pockets

Rib-knit waistband and ankle cuffs

Tapered jogger leg, 8 3/4" opening

**Core Color Sizes:**

R: XS-3XL (28 1/2")

P: XS-XL (26 1/2")

T: XS-XL (31")

**Fashion Color Sizes:**

R: XS-3XL (28 1/2")

Shown in Caribbean on page

18 and on page 19 Teal,

Lilac, and Royal

**Available in up to 24 colors**

\*See product guide for  
fashion color sizing

**NEW  
COLOR**

**RSPT  
RASPBERRY  
TARTE**



ALL THE FEELS  
THE  
*Touch*  
COLLECTION



# Turn on the Bright

## STYLE | MC2411 THREE POCKET TOP

V-neck  
3 patch pockets  
Front shoulder yokes  
Core Color Sizes:  
R: XXS-5XL ( 27")  
Fashion Color Sizes:  
R: XS-3XL ( 27")  
Shown in Artic Aqua

## STYLE | MC2702 ZIPPER POCKET PANT

Adjustable front waist ties  
2 zipper pockets at the hip  
2 cargo pockets  
Side vents at hem  
Straight leg, 16" opening  
Sizes:  
R: XXS-5XL ( 30 1/2")  
P: XS-2XL ( 28 1/2")\*  
T: XS-XL ( 33")\*  
Fashion Color Sizes:  
R: XS-3XL ( 30 1/2")  
Shown in Arctic Aqua on pages 20-21  
and Pewter on page 21  
Available in 19 Colors

\*See product guide for  
fashion color sizing

NEW  
COLOR

ARAO  
ARTIC AQUA



NOT ON AMAZON | NEVER OFF MAP  
THE  
*Insight*  
COLLECTION

NEW  
COLOR

ARAQ  
ARTIC AQUA

NEW  
COLOR

HFGR  
HEATHER  
FOG GREY

**NEW STYLE | MC601**  
LONG SLEEVE KNIT  
REVERSIBLE PULLOVER  
Missy fit

Boat neckline  
Drop shoulder  
Decorative knot can be  
worn in front or back  
Fold-over cuffs

**Sizes:**  
R: XS-3XL (16 1/2")  
Shown in Artic Aqua and  
Heathered Gray  
**Available in 2 Colors**

**Pullover Fabric:**  
70% Polyester / 25% Rayon /  
5 % Spandex

*Insight Fabric*

FABRIC: Breathable | Super Soft | Moisture Wicking | 100% Polyester

MEDCOUTURE | 21



**NEW PRINT | RWPT**  
**RAINBOW PATCH**  
Sizes: R: XS-3XL (26")



**NEW PRINT | JMST**  
**JUST MY STRIPE**  
Sizes: R: XS-3XL (26")



**NEW PRINT | TWHT**  
**TWILIGHT HEARTS**  
Sizes: R: XS-3XL (26")





TRENDING PATTERNS  
 THE *Prints* COLLECTION

**NEW PRINT | RTKC**  
 RETRO KITCH  
 Sizes: R: XS-3XL (26")



**NEW PRINT | OBGD**  
 OMBRE GARDEN  
 Sizes: R: XS-3XL (26")



**NEW PRINT | CRON**  
 CHERRY ON  
 R: XS-3XL (26")

**STYLE | MC8564**  
 V-NECK TOP  
 Seasonal prints  
 Super soft fabric  
 Two patch pockets  
 Sizes: R: XS-3XL (26")

The  
**INSIGHT**  
FOR MEN  
Collection

**NEW STYLE | MC360**

**MEN'S ZIP**

**FRONT JACKET**

Men's fit

Knit stand-up collar and cuffs

3 pockets: 1 chest, 2 patch

Back yoke

R: XS-3XL ( 28 1/2")

Shown in Pewter

Available in 6 Colors







**STYLE I MC2478**

**1 POCKET TOP**

Tuck in or leave out  
Secure chest pocket  
Slight forward shoulder  
R: XS-5X (30")  
Shown in Royal  
Available in 6 Colors

**STYLE I MC2765**

**JOGGER**

Jersey knit waistband  
Outer waist ties  
Single layer cargo pockets  
Jersey knit ankle cuffs  
Single back pocket  
Tapered jogger leg,  
9 1/2" opening  
R: XS-5X (29 1/2")  
S: XS-3X (27")  
T: XS-3X (31 1/2")  
Shown in Royal  
Available in 6 Colors



**INSIGHT FABRIC**

Breathable | Super Soft | Moisture Wicking | 100% Polyester

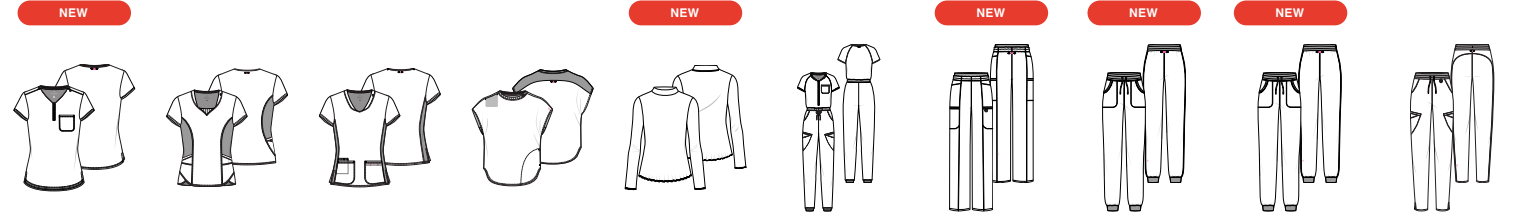


*It's a*  
Colorful  
Life!

## COLLECTION FEATURES

Four-Way Stretch / Moisture Wicking / Easy Care

### WOMEN'S



MC705	MC701	MC702	MC703	MC707	MC502	MC105	MC106	MC107	MC101
Quarter Zip V-Neck Tuck In Top	Stylized Rib Knit V-Neck Top	Shaped V-Neck Top	Round Neck Tuck In Top	Lettuce Edge Mock Neck Underscrub	Zip Front Jumpsuit	High Rise Wide Leg Cargo Pant	Fleece Natural Rise Jogger	Velour Natural Rise Jogger	Mid Rise Drawstring Cargo Pant
1 Pocket	4 Pockets	3 Pockets	2 Pockets	No Pockets	5 Pockets	4 Pockets	2 Pockets	2 Pockets	4 Pockets
XS-3XL (25")	XS-3XL (26")	XS-3XL (25.5")	XS-2XL (25")	XS-2XL (25")	XS-2XL (29")	R/ XS-2XL (31") T/ XS-XL (34")	XS-2XL (28.5")	XS-2XL (28.5")	R/ XS-3XL (29.5") P/ XS-2XL (27")
							Pairs with MC316	Pairs with MC317	
Black BLK				N/A				Black* BLK	
Navy NAVY				N/A			N/A	N/A	
Pewter PWTR				N/A	N/A	N/A	N/A	N/A	
Royal ROYL				N/A	N/A	N/A	N/A	N/A	
N/A	N/A	N/A	N/A	Wine* WINE	Wine* WINE	N/A	N/A	Wine* WINE	N/A
N/A	Ultra Magenta UTMG			N/A		N/A	N/A	N/A	R: XS-2XL No Petite
N/A	Hyper Blue HYBR			N/A		N/A	N/A	N/A	R: XS-2XL No Petite
N/A	N/A	N/A	N/A	N/A	N/A	N/A	N/A	N/A	N/A
Purple Surge PUSG /XS-2XL	NEW FA24	NEW FA24	NEW FA24	N/A	N/A	NEW FA24	N/A	N/A	XS-2XL No Petite
N/A	N/A	N/A	NEW FA24	N/A	N/A	N/A	NEW FA24	N/A	N/A
N/A	N/A	N/A	N/A	N/A	N/A	N/A	Heather Grey HGRY	N/A	N/A
N/A	N/A	N/A	N/A	N/A	N/A	N/A	N/A	N/A	N/A
N/A	N/A	N/A	N/A	Deep Emerald* DEMD	Deep Emerald* DEMD	N/A	N/A	Deep Emerald* DEMD	N/A

\* Color Available October 2024

# The Touch Collection

## COLLECTION FEATURES

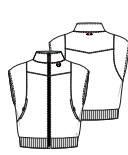
Cool & Comfortable / Soft as Cotton

### WOMEN'S

NEW

NEW

NEW



### WOMEN'S

BEST SELLER

NEW



MC102	MC315	MC316	MC317	MC501	MC7459	MC607	MC7468	MC7448	MC7425
Mid Rise Jogger	Two-Tone Sherpa Hooded Zip Pullover	Fleece Embossed Zip Front Hoodie	Velour Embossed Zip Front Hoodie	Zip Front Cropped Vest	V-Neck Shirttail Top	Split Round Neck Top	V-Neck Knit Back Top	V-Neck Knit Tuck In Top	Raglan Sleeve Top
5 Pockets	3 Pockets	2 Pockets	2 Pockets	2 Pockets	4 Pockets	2 Pockets	4 Pockets	1 Pocket	6 Pockets
R/ XS-3XL (29") P/ XS-2XL (26.5") T/ XS-XL (32")	XS-2XL (23")	XS-2XL (24.5")	XS-2XL /24.5"	XS-2XL (20")	XS-5XL (27")	XS-3XL (25.5")	XS-5XL (27")	XS-3XL (27.5")	XS-3XL (27")
		Pairs with MC106	Pairs with MC107						
	N/A		Black* BLK		Black BLK				
	N/A	N/A	N/A		Navy NAVY	N/A			
	N/A	N/A	N/A	N/A	Pewter PWTR				
	N/A	N/A	N/A	N/A	Royal ROYL	N/A			
N/A	N/A	N/A	Wine* WINE	N/A	Wine WINE	N/A	N/A		
R: XS-2XL I P: XS-XL No Tall	N/A	N/A	N/A		Caribbean CARI	N/A	N/A		N/A
R: XS-2XL I P: XS-XL No Tall	N/A	N/A	N/A	N/A	Ciel CIEL	N/A	N/A		
N/A	N/A	N/A	N/A	N/A	White WHIT	N/A	N/A	N/A	N/A
XS-2XL No Petite or Tall	N/A	N/A	N/A	N/A	Hunter HNTR	N/A	N/A	N/A	N/A
XS-2XL No Petite or Tall	N/A	NEW FA24	N/A	N/A	Teal TEAL	N/A	N/A		
N/A	N/A		N/A	N/A	Galaxy GLXY	N/A	N/A		N/A
N/A	Nitro Nude NTND	N/A	N/A	N/A	Red REDD	N/A	N/A		N/A
N/A	N/A	N/A		N/A	Eggplant EGPL	N/A	N/A		N/A
			Deep Emerald* DEMD	N/A	Olive OLIV	N/A	N/A		
					Slate SLAT	N/A	N/A		
					Cloud CLOD	N/A	N/A	N/A	N/A
					Coral CRAL	N/A	N/A	N/A	N/A
					Ice Pink IPNK	N/A	N/A		N/A
					Lilac LILA	N/A	N/A		
					Pink Punch PKPH	N/A	N/A	N/A	N/A
					Periwinkle PWNK	N/A	N/A	N/A	N/A
					N/A	N/A	N/A	Sea Mist SIXS	N/A
					N/A	N/A	N/A	Apricot Sorbet APSO	N/A
Raspberry Tarte RSPT / XS-3XL						NEW FA24	N/A	NEW FA24	N/A



## COLLECTION FEATURES

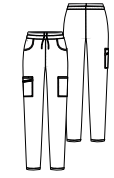
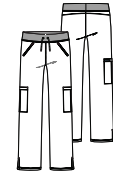
Breathable / Super Soft / Moisture Wicking

### WOMEN'S

BEST SELLER

NEW

BEST SELLER



MC2411	MC2468	MC609	MC2432	MC601	MC2711	MC2702	MC009	MC2660
V-Neck Top	Side Pocket V-Neck Top	Zippered Henley Top	One Pocket Top	Reversible Pullover	Jersey Knit Jogger	Zipper Pocket Pant	Mid Rise Pull-on Ankle Pant	Warm Up Jacket
3 Pockets	4 Pockets	3 Pockets	1 Pocket	No Pockets	6 Pockets	4 Pockets	5 Pockets	3 Pockets
XXS-5XL (27") Fash: XS-3XL (27")	XS-3XL (27")	XS-3XL (25.5")	XS-5XL (27")	XS-3XL (16.5")  Polyester/Rayon/ Spandex	R/ XS-3XL (28.5") P/ XS-XL (26.5") T/ XS-XL (31")	R/ XXS-5XL (30.5") P/ XS-2XL (28.5") T/ XS-XL (33")	R/ XS-3XL (29.5") P/ XS-2XL (27") T/ XS-XL (32.5")	XS-5XL (26")
Black BLK				N/A				
Navy NAVY				N/A				
Pewter PWTR				N/A				
Royal ROYL				N/A				
Wine WINE		N/A		N/A			N/A	
Caribbean CARI		N/A	XS-3XL	N/A			N/A	N/A
Ciel CIEL				N/A				
Hunter Green HNTR		N/A		N/A			N/A	
Teal Blue TEAL		N/A		N/A			N/A	
Galaxy GLXY		N/A		N/A			N/A	
Olive OLIV		N/A		N/A			N/A	
Cloud CLOD		N/A		N/A			N/A	
Coral CRAL		N/A	XS-3XL	N/A			N/A	N/A
Grape GRAP		N/A		N/A			N/A	
Lilac LILA		N/A	XS-3XL	N/A			N/A	N/A
Taffy Pink TFPK		N/A		N/A			N/A	N/A
N/A	N/A	N/A	N/A	N/A	Perfectly Pink PPPK		N/A	N/A
N/A	N/A	N/A	N/A	Heather Fog Grey HFGR	N/A	N/A	N/A	N/A
Arctic Aqua ARAQ / XS-3XL	XS-3XL	N/A	N/A	NEW FA24	XS-3XL No Petite or Tall	XS-3XL No Petite or Tall	N/A	N/A

# The Peaches Collection

FABRIC:  
92 POLYESTER  
/ 8 SPANDEX

## COLLECTION FEATURES

Moisture Wicking / SPF 50 / Ultra-Soft / Maximum Stretch

### WOMEN'S

BEST SELLER



BEST SELLER

MC8482	MC8470	MC8721	MC8674
<b>Tuck In V-Neck Top</b>	<b>Raglan V-Neck Top</b>	<b>Seamed Jogger</b>	<b>Warm-Up Jacket</b>
<b>2 Pockets</b>	<b>3 Pockets</b>	<b>4 Pockets</b>	<b>3 Pockets</b>
XS-3XL (27.5")	XS-3XL (26.5")	R/ XS-3XL (28.5") P/ XS-XL (26.5") T/ XS-XL (31")	XS-3XL (25")
Black BLK			
Navy NAVY			
Pewter PWTR			
Royal ROYL			
Wine WINE			
Olive OLIV		No Tall	N/A
Cinnamon CINM			N/A
Gelato GELO			N/A
Taffy Pink TFPK			

# The Layers Collection

FABRIC:  
100 POLYESTER

## COLLECTION FEATURES

Moisture Wicking

### WOMEN'S

NEW



MC706	MC8499	MC700	MC8684
<b>Lettuce Edged Knit Tuck In Top</b>	<b>Performance Knit Tee</b>	<b>Ruched Underscrub</b>	<b>Performance Fleece Jacket</b>
<b>1 Pocket</b>	<b>No Pockets</b>	<b>No Pockets</b>	<b>4 Pockets</b>
XS-2XL (23.5")	XS-3XL (26")	XS-2XL (24")	XS-3XL (26")
Black BLK			
Navy NAVY		Navy* NAVY	
N/A	Pewter PWTR	N/A	
N/A	N/A	N/A	Royal ROYL
White WHIT		White* WHIT	N/A
Amp Pink AMPK	N/A		N/A
Cyber Lime CYLM / XS-XL	N/A	N/A	N/A

\* Color Available October 2024



# Touch for Men

Fabric:  
76 POLYESTER/  
21 RAYON / 3 SPANDEX

# INSIGHT FOR MEN

Fabric:  
100 POLYESTER

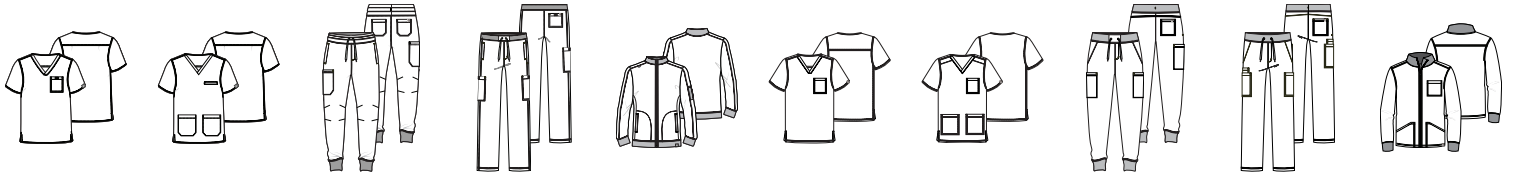
## COLLECTION FEATURES

Cool & Comfortable / Soft as Cotton

## COLLECTION FEATURES

Breathable / Super Soft / Moisture Wicking

### MEN'S



MC7478	MC7477	MC7777	MC7779	MC7678	MC2478	MC2486	MC2765	MC2772	MC360
Tuck In V-Neck Top	V-Neck Top	Zip Fly Cargo Jogger	Zip Fly Straight Leg Pant	Warm-Up Jacket	Tuck In V-Neck Top	V-Neck Top	Zip Fly Cargo Jogger	Zip Fly Straight Leg Pant	Zip Front Jacket
1 Pocket	3 Pockets	5 Pockets	6 Pockets	3 Pockets	1 Pocket	3 Pockets	5 Pockets	6 Pockets	3 Pockets
XS-3XL /30"	XS-3XL /30"	R/ XS-3XL /29.5" S/ XS-2XL /27" T/ XS-2XL /31.5"	R/ XS-3XL /31" S/ XS-3XL /28.5" T/ XS-3XL /33"	XS-3XL /30.75"	XS-5XL /30"	XS-5XL /30"	R/ XS-5XL /29.5" S/ XS-3XL /27" T/ XS-3XL /31.5"	R/ XS-5XL /31" S/ XS-3XL /28.5" T/ XS-3XL /33"	XS-3XL /28.5"
Black BLK									
Navy NAVY									
Pewter PWTR									
Royal ROYL				N/A					
Wine WINE				N/A					
Caribbean CARI				N/A	N/A	N/A	N/A	N/A	N/A
Ciel CIEL				N/A					